

euro-flow



FLOW SOLUTION PROVIDER

- **ON/OFF VALVES (DIN-ANSI)**
- **FILTRATION & SEPARATION**
- **PROTECTION EQUIPMENT**
- **PIPELINE & TANK EQUIPMENT**
- **PUMP PROTECTION DEVICES**
- **CONTROL VALVES & AUTOMATION**



euro-flow

INDUSTRIAL VALVES

Types, Size, Pressure, Materials

ON-OFF (DIN & ANSI)

- Gate, Globe, Check
- Bottom valves
- Plug Valves
- Ball Valves
- Butterfly valves
- ...

Size : 1/4 up to 36"
: DN 15 - DN 500

Pressure : 150 up to 2500 Lbs
: PN10 to PN160

Materials : A105/A350LF2/A216WCB/.. WC6/WC9/C5/C12/...



FILTRATION TECHNOLOGY



DANGO & DIENENTHAL

Filtertechnik GmbH

Automatic Filters

- Filter automat
- Backwash Drum Filter
- JET Filter
- Plate Filter

Hydrocyclones

- Separator
- Multi-Separator

Manual Filters

- Single/Duplex Filter
- Bag Filter



euro-flow

PROTECTION EQUIPMENT

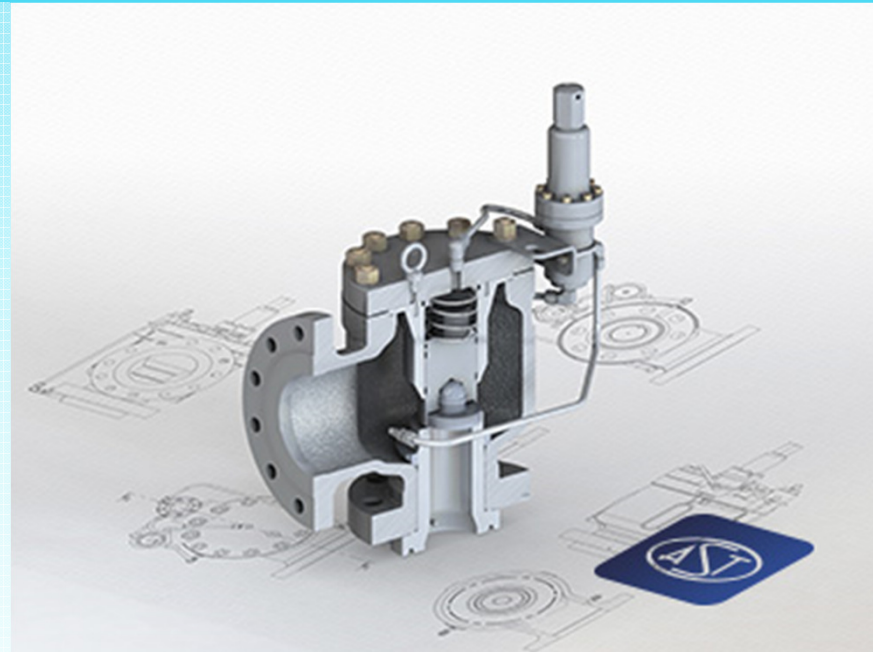
Types, Size, Pressure, Materials

SAFETY VALVES

- Pressure relief
- Thermal relief
- Pressure sustaining
- Vacuum and tank relief
- Assisted pressure relief
- Change-over valve

FLAME ARRESTORS

- In-line deflagration
- In-line detonation
- End of line deflagration
- Endurance burning



PIPELINE & TANK EQUIPMENT



KEMPE

- Quick opening closures

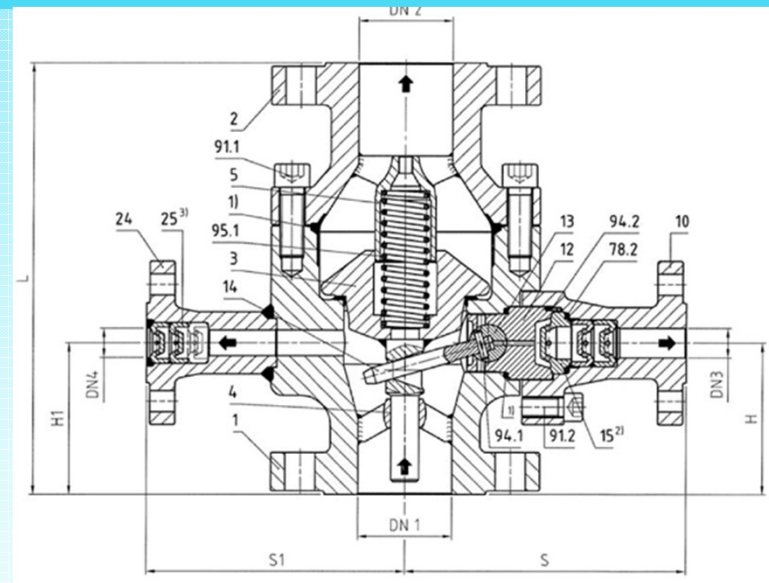


euro-flow

PUMP PROTECTION EQUIPMENT

SCHROEDER

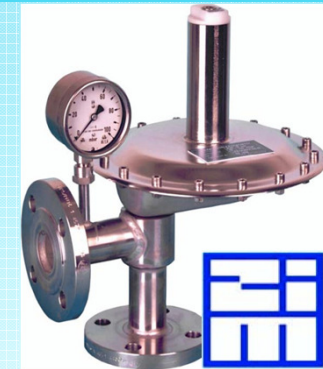
- Automatic recirculation valve
- Minimum Flow Valve
- High Pressure Control Valve
- Multiport Throttles
- Back Pressure Device



CONTROL VALVES & AUTOMATION

ZIMMERLI

- Pressure regulator Self Acting
- Tank Blanketing

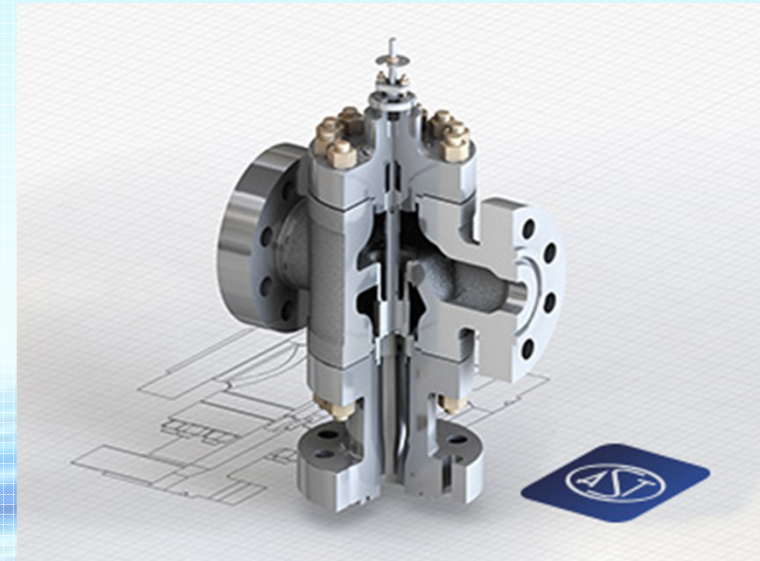


AST

- Control valves

AUTOMATION

- Pneumatic actuators



euro-flow

Reference: Total Refinery Antwerp



Project: TA2012
Application: High pressure steam: 130 bar, 410°C
Material: WC9
Sizes: 2" up to 16"
Class: 900 & 1500

Initial demand: replacement Wedge Gate

After analyse process conditions & wear on initial installed valves TRA agree with supply

**Parallel slide Gate & Globe Valve,
pressure seal bonnet types**

+ live-loaded packing system

+ special by-pass warm-up system

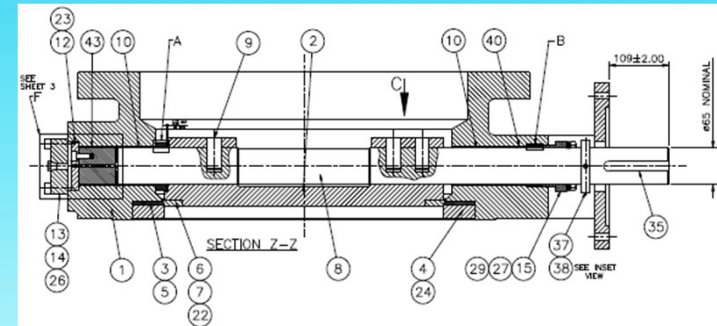


euro-flow

Reference: Borealis



Application: Wast boiler heat exchanger,
high cycling valves
guarantee: **1 Mio cycles**
Material: Duplex
Sizes: 24"
Class: 300



**Due to high cycling request we supplied
Triple offset butterfly valves**

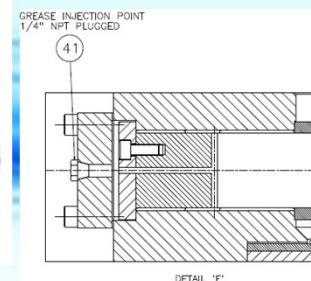
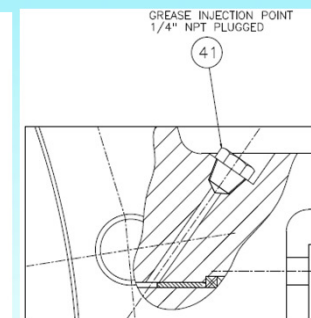
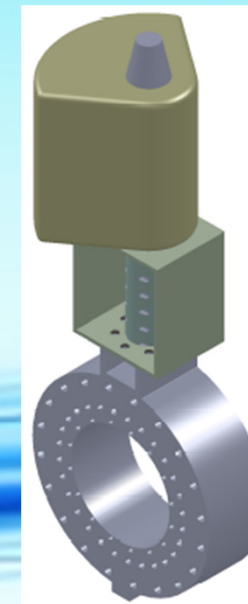
Modification of std. valves for grease injection

24" Triple Offset Butterfly valve

+ no-play coupling & bracket

+ automatic greasing system

+ pneumatic steering cabinet



euro-flow

Reference: Fluxys

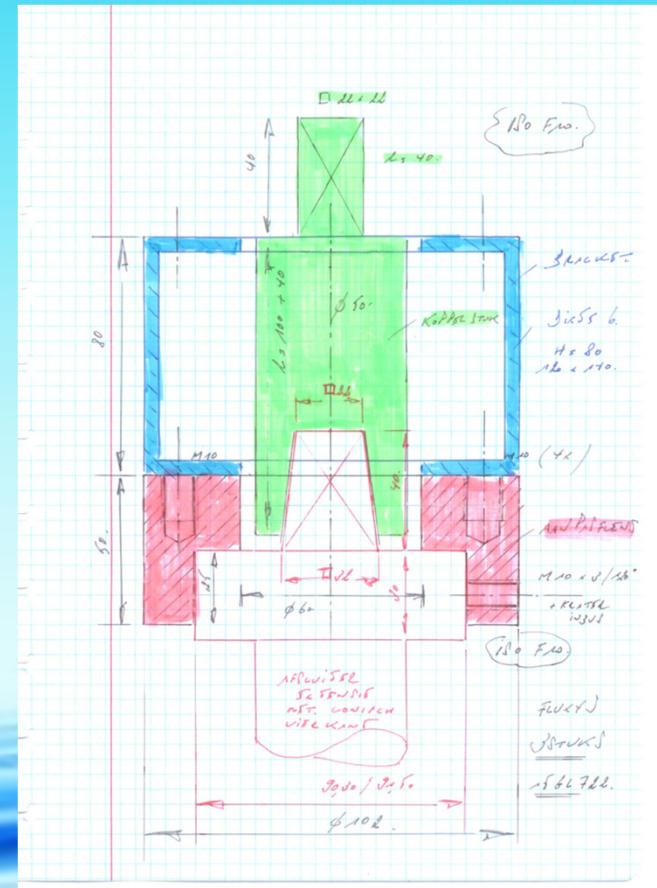


Project: Automatisations valves
Application: Natural Gas, - 46°C Design
Material: SS 316
Sizes: 3"
Types: Pneu. Act. spring close
Class: 600

Taylor Made coupling and bracket to fit with underground installed valves.

Spring return pneumatic actuator

+ steering panel



euro-flow

Reference: GGS



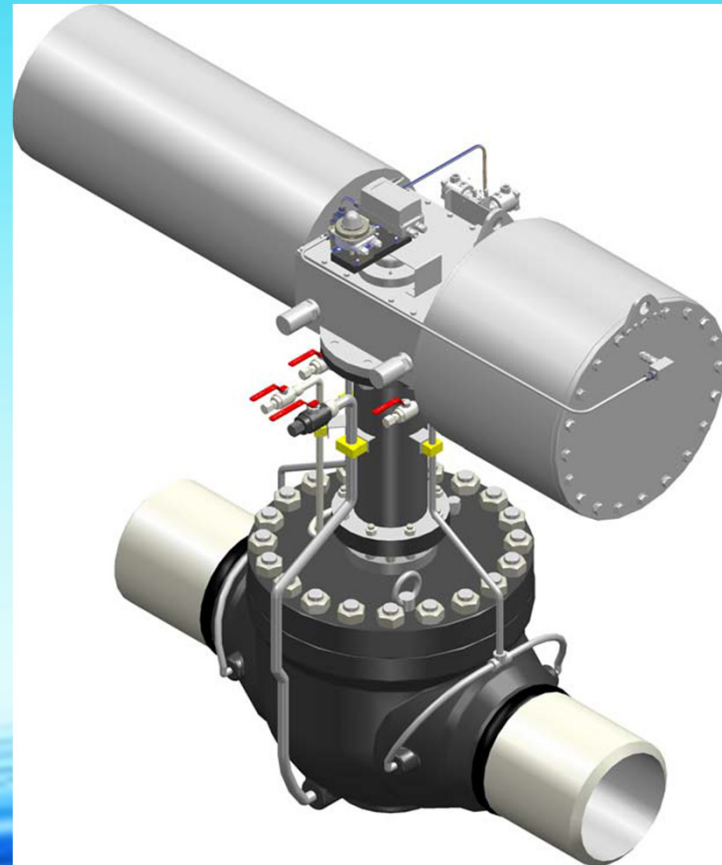
Project: China Petrol Cy Taiwan
Application: Natural Gas, - 46°C Design
Material: LCC/CF8M Trim
Sizes: 16"
Types: Top Entry Ball Valves
Class: 900

Top Entry Ball Valve with pipe pups

with extension

+ spring return pneumatic actuator

+ steering panel

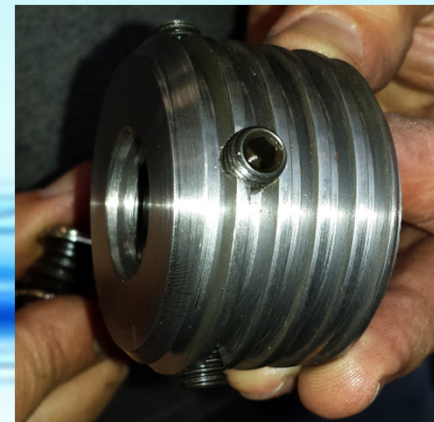


euro-flow

Reference: Electrabel Amercoeur

Electrabel
GDF SUEZ

Project: Power station Amercoeur
Application: Inverse rotation sense
Replace old Babcock valves by Persta
Left turn > Right turn
Product: steam & condensate
Material: C12
Size: 2"/DN50 up to 12"/DN300
Types: Parallel slide Gate & Globe Valves
Class/PN: CI150/PN16 – CI2500



euro-flow

Reference: Total Refinery Antwerp



Application: Fail safe protection main
refractionator

Material: A217 C5

Sizes: 16"

Class: 300 & 1500

**Initial demand was for Gate Valve with fail safe
pneumatic actuator.**

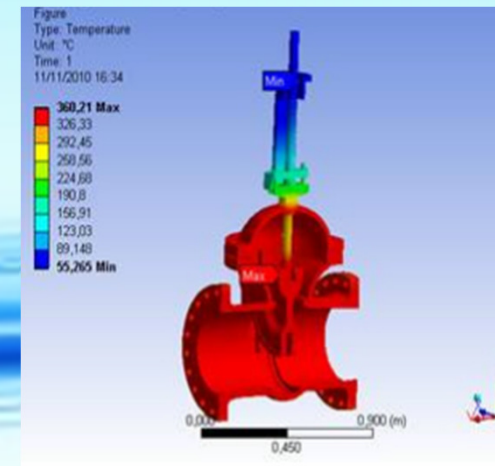
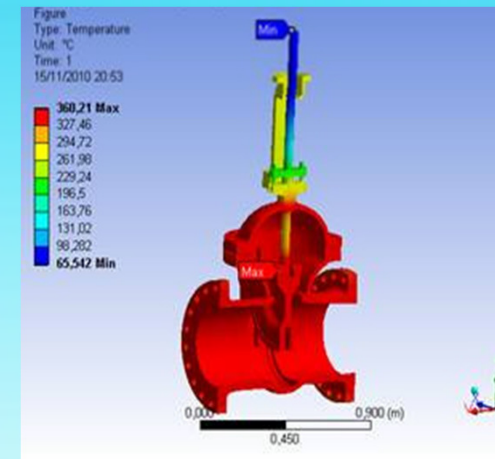
Analyse off process conditions by heat simulation

Supplied units: 2 x 16" Gate Valve, Class 300

multi-turn pneumatic actuator

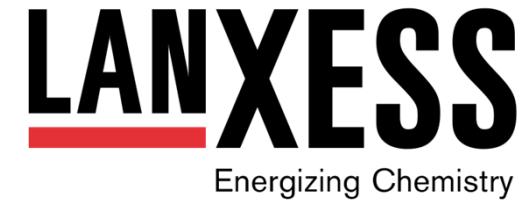
Taylor made fire jacket

**design off back-up high pressure
nitrogen bottle rack**



euro-flow

Reference: Lanxess



Application: Ethylene, - 110°C
Material: CF8M
Sizes: 2 to 12"
Types: Cryogenic Gate & Globe Valves
Class: 300

Several Cryogenic Valves



euro-flow

Reference: Tihange

Electrabel
GDF SUEZ

Project: Nuclear Power Station
Tihange

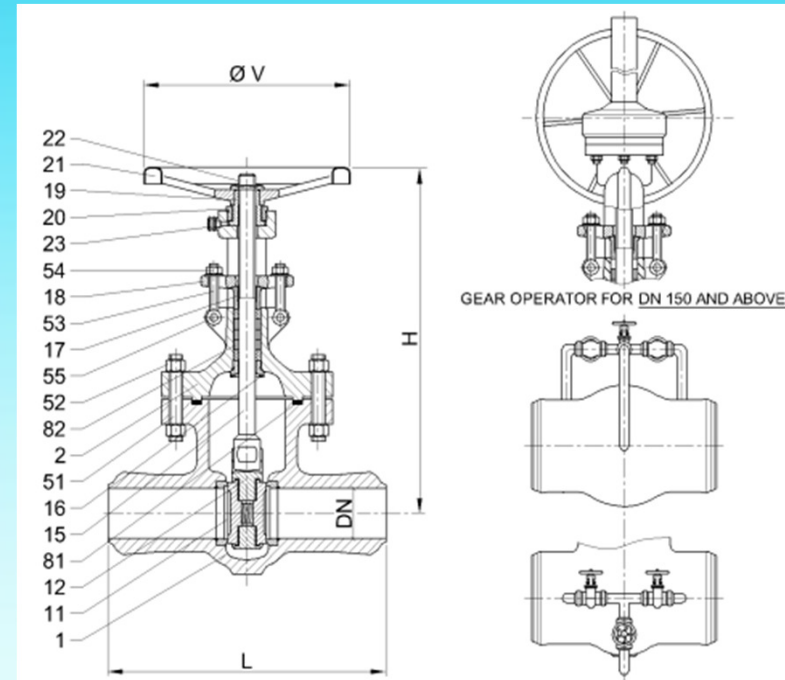
Application: Steam, Zone 2

Material: A216WCB

Size: 10"

Types: Parallel slide Gate Valve
ValvoSider

Class: Class 900

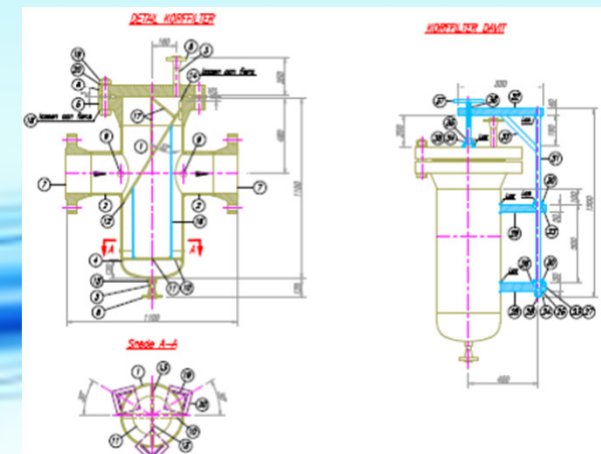
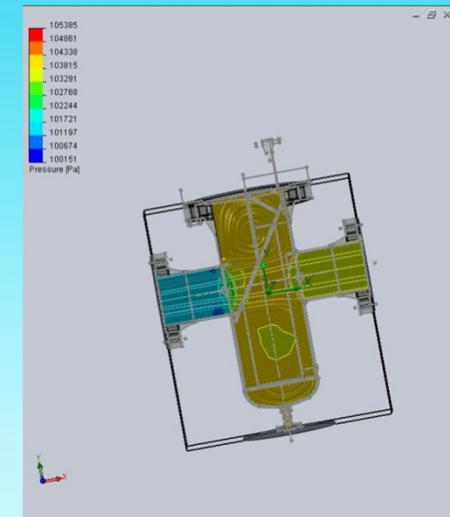


euro-flow

Reference: NATO



Project: Upgrade valve manifold
Application: Nato Pipeline
Spec.: Belgian Gaslaw & PED
Material: A105N
Sizes: 2" to 12"
Types: Trunnion mounted Ball valves
Taylor Made Basket Filter
P/V Vent with Flame arrestor
Volumetric Pump Unit
...
Class: 600



euro-flow

Reference: VFT



Project: PA B366
Application: Tank Outlet Valve
Nicolini Italy
Material: CF8M
Size: DN 100
Types: Ram Bottom Outlet
with heating jacket
PN: 16



euro-flow

Reference: KVC



Project: DL 2012/75
Application: Pig Launcher Receiver
Kempe Germany
Material: A350LF2
Size: 10"
Types: ENRIEMAT
Quick Opening Closure
Class: 600



euro-flow

Reference: EDF



Project: Centrale Ham
Application: Extended stem adaptation
for platform operation
&
supply off several valves for
steam, condensate
Material: Carbon Steel
Size: 2"/DN50 to 12"/DN300
Types: Gate Valve
Class: PN40/Class 600



euro-flow

Euro-Flow BVBA
Lodevleeshouwerslaan 51
2900 Schoten BELGIUM
T +32 (0)3 289 50 01
F +32 (0)3 289 50 04
E-mail: info@euro-flow.com
Web: www.euro-flow.com

Since August 2005

euro-flow